

BOSTON HARBOR AUCTIONS

**SUBSTANTIAL COLLECTION OF
IMPORTANT NAUTICAL ANTIQUES AND MARITIME ARTIFACTS
OVER 300 LOTS!**

**IMPORTANT PIECES OF YACHTING HISTORY AND THE AMERICA'S CUP
TO BE SOLD WITH REPRESENTATION OF MANY YACHT CLUBS INCLUDING
NEW YORK YACHT CLUB, EASTERN YACHT CLUB,
ATLANTIC YACHT CLUB AND SEAWANHAKA YACHT CLUB.**

**ALSO SELLING A SUPERB COLLECTION OF SHIP MODELS INCLUDING
STEAM YACHTS, AMERICA'S CUP YACHTS, TUGS, SPEEDBOATS ETC...**



1021 - SOLID CAMPHORWOOD CHEST WITH INLAID BRASS BANDS, CORNERS AND HANDLES. INTERIOR IS FITTED WITH TWO COMPARTMENTS. HINGED TOP HAS AN INLAID BRASS PLATE. 32" LONG X 17" WIDE X 15" HIGH.



1028 - INTRICATELY CARVED PLAQUE WITH HARVARD UNIVERSITY COAT OF ARMS, WAVES AND SEA SHELL. FROM A CAMBRIDGE ESTATE. 55" WIDE X 30" TALL



1032 - ACME PHOTO SERVICE PHOTOGRAPH OF J. PIERPONT MORGAN, JR.'S PRIVATE YACHT "CORSAIR". 7" X 9"



1054 - EXCEPTIONAL MODEL OF THE LIGHTSHIP "BOSTON". 33"L X 13"W X 24"H.



1035 - MID 20TH CENTURY BRIDGE TELEGRAPH. 13" FACEPLATE DIAMETER X 42" OVERALL HEIGHT.



1055 - TRIPLEX ANCHOR LANTERN IN A SELDOM SEEN SIZE. 25" TALL



1057 - EARLY 20TH CENTURY COPPER AND BRASS LIGHTSHIP BEACON, 49" TALL.



1092 - SOLID BRASS SHIP'S DOCKING TELEGRAPH. 47" TALL X 16 1/2" FACE DIAMETER.



1078 - IVORY VANITY SET FROM THE STEAM YACHT AZTEC OF 1902



1111 - PERIOD HALF MODEL OF THE 1930 AMERICA'S CUP CONTENDER "WHIRLWIND" BUILT IN BOSTON BY GEORGE LAWLEY. HULL IS IN IT'S ORIGINAL PAINT WITH ALLIGATOR FINISH AND MOUNTED TO AN EXOTIC WOOD BACKBOARD. BACKBOARD DIMENSIONS 7" X 27"



1069 - WOODEN TAPERED CANE WITH CARVED WHALE IVORY TOP. THE CANE IS 33 3/4"



1081 - MODEL OF THE AMERICA'S CUP K BOAT "COLUMBIA". 44" LONG X 14" WIDE X 71" TALL.



1083 - U.S. LIGHTHOUSE ESTABLISHMENT OIL CAN.



1115 - SERVING SET FROM OCEAN LINER "UNITED STATES".



1085 - 1901, NEWPORT YACHT RACING ASSOCIATION TROPHY FROM YACHT "COLUMBIA" OWNED BY J.P. MORGAN. WEIGHT: 116 OUNCES OF STERLING. DIMENSIONS: HEIGHT 10 1/2 INCHES; WIDTH 11 3/4; DIAMETER OF TOP 6 1/4 INCHES.



"CARONIA"
MODEL BUILT
BY BASSET-LOWKE



1125 - MUSEUM QUALITY MODEL OF THE CUNARD LINES OCEAN LINER RMS CARONIA. 59" LONG



1114 - THOMAS WILLIS OIL VELVET AND SILK OF INDUSTRIALIST A.G. BIGELOW'S PRIVATE YACHT "TUNA" BY THOMAS WILLIS. A CARD AFFIXED TO THE LOWER LEFT CORNER READS "PRESENTED TO MR. A.G. BIGELOW, BY THE CREW OF THE CRUISING YACHT "TUNA", N.Y.C., ALBERT BURNS, SAILING MASTER, JOHN OHMAN, ENGINEER, CHARLES ZWICKER, STEWARD, JANUARY 6TH, 1911. WORK IS MOUNTED INTO A GOLD SHADOW BOX FRAME WITH GLASS FRONT PIECE. ON SIGHT 16" X 26 1/2". OVERALL DIMENSIONS 20" X 29 1/2".



1121 - ORIGINAL BLACK AND WHITE PRINT SHOWING CHANDLER HOVEY'S M-CLASS YACHT ISTALENA LEADING HAROLD S. VANDERBILT'S "PRESTIGE" UNDER FULL SAIL.

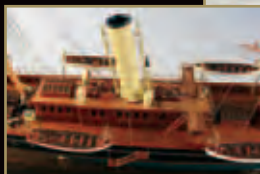


1128 - LARGE CIRCULAR MIRROR CONSTRUCTED WITH HUNDREDS OF SEA SHELLS.



1053 - ONE OF A SELECTION OF PORTHOLE TABLES

1206 - A MAGNIFICENT MODEL OF THE AMERICAN STEAM YACHT CORSAIR 1890. WITH MASTS AND BOOMS, STANDING AND RUNNING RIGGING, ANCHORS, ANCHOR DAVITS, WINCH, DECK LIGHTS, paneled DECK HOUSES, WITH DOORS AND WINDOWS, DECK RAILS, COMPANIONWAYS, DECK LIGHTS, OPEN BRIDGE WITH TELEGRAPHS, BINNACLE AND HELM, VENTILATORS, STAYED FUNNEL, WITH SAFETY VALVE, EXTENSION RAILS AND PINS, paneled BULWARKS, AFT HELM AND BINNACLE AND FIVE SHIP'S BOATS IN DAVITS, WITH INTERIOR FITTINGS, AS APPROPRIATE, AND OTHER DETAILS. THE HULL FINISHED IN BLACK, GREEN AND MAT-VARNISH, IS MOUNTED ON TWO TURNED BRASS COLUMNS IN INLAID MAHOGANY FRAMED GLASS CASE AND TABLE. DIMENSIONS: 50" X 13" X 56"



TREASURES FROM THE LIFE OF J. PIERPONT MORGAN AND HIS YACHTS NAMED "CORSAIR"

IN THE WAKE OF OUR MAY 1ST SALE, OUR CONSIGNORS HAVE REWARDED US WITH ANOTHER CHOICE SELECTION OF PERSONAL POSSESSIONS OF J.P. MORGAN, MANY OF WHICH ARE ON THESE PAGES. HERE IS ANOTHER OPPORTUNITY TO OWN SOMETHING VALUED AND TREASURED BY THE MOST INFLUENTIAL FINANCIER IN HISTORY.



1101 & 1162 - SILVER GOBLET FROM J.P. MORGAN'S STEAM YACHT "CORSAIR" OF 1898 BY HOWARD & CO., NEW YORK (1866-



1922). THE FRONT OF THE GOBLET IS ENGRAVED "CORSAIR 1898" IN SCRIPT. THE MAKER'S STAMP "HOWARD & CO. STERLING NEW YORK" IS NOTED ON THE BOTTOM OF THE GOBLET AS WELL AS THE ENGRAVING "FROM J.C.R. & F.P." THESE ARE FRIENDS OF THE MORGAN FAMILY, JACOB CROWNINSHIELD ROGERS PEABODY AND HIS WIFE FLORENCE PEABODY.



1124 - RARE PAIR OF LINEN LAP NAPKINS FROM J. PIERPONT MORGAN'S PRIVATE STEAM YACHT "CORSAIR". ALSO, SIX MORE LOT'S OF CORSAIR LINENS.



1009 - OVAL, SCALLOPED EDGE PLATTER 11" X 8 1/2" FROM J.P. MORGAN'S FLAGSHIP CORSAIR. THE MINTON'S CHINA HAS THE J. PIERPONT MORGAN SIGNATURE NAVY BLUE TRIM WITH GOLD ACCENTS. TOP, INSIDE EDGE OF PLATTER HAS THE NEW YORK YACHT

CLUB BURGEES AND THE COMMODORE'S FLAG OF ANCHOR WITH STARS ON A BLUE FIELD, CROSSING STAFFS WITH A BLUE BANNER BENEATH READING "FLAGSHIP". REVERSE HAS MINTONS STAMP.



1059 DINNER PLATE FROM J.P. MORGAN'S YACHT CORSAIR. MADE BY MINTONS.



1084 BOWL FROM J.P. MORGAN'S YACHT CORSAIR II WHEN IT WAS FLAGSHIP OF THE NEW YORK YACHT CLUB AND MORGAN WAS COMMODORE. MADE BY MINTONS.



1097 - DINNER PLATE FROM J.P. MORGAN'S YACHT CORSAIR II WHEN IT WAS FLAGSHIP OF THE NEW YORK YACHT CLUB AND MORGAN WAS COMMODORE. MADE BY MINTONS.



1176 - DINNER PLATE FROM J.P. MORGAN'S N.Y.Y.C. "FLAGSHIP" YACHT "CORSAIR" STAMPED MINTONS. 10 1/4" DIAMETER.



1210 - ASPARAGUS DISH FROM THE "FLAGSHIP" YACHT OF THE NEW YORK YACHT CLUB, J.P. MORAN'S CORSAIR, 10" DIAMETER.



1246 - PHOTO OF J.P. MORGAN, JR.



1245 - RARE PHOTO OF J.P. MORGAN TAKEN FEBRUARY 17, 1913 AT HOTEL DE PARIS, MONTE CARLO. HE PASSED AWAY MARCH 31, 1913. 5" x 7".



1100 - STEAM YACHT "CORSAIR" CATCHES A SHARK. 8" x 10 3/4"



1017 - ORIGINAL PHOTO OF CORSAIR



1236 - EARLY PHOTOGRAPH OF "THE CORNER" J.P. MORGAN'S HEADQUARTERS AT WALL AND BROAD ST. IN MANHATTAN. 7 1/4" x 8 1/4".



1096 - ORIGINAL PRESS PHOTO OF CORSAIR "HEADING TO ENGLAND".



1051 - AERIAL VIEW OF CORSAIR IV, 9 1/2" x 7". JUNE 13, 1934.



1103 - SERVING BOWL FROM J.P. MORGAN'S YACHT CORSAIR II WITH FLAGSHIP BANNER AND COMMODORE'S FLAG. 10" x 7 1/2"



1130A - DESSERT PLATE FROM J.P. MORGAN'S PRIVATE STEAM YACHT CORSAIR WITH COMMODORE'S FLAG AND "FLAGSHIP" BANNER. 9" DIAMETER.



1158 - SERVING BOWL FROM J.P. MORGAN'S N.Y.C. "FLAGSHIP" YACHT CORSAIR. 8 1/4" x 6 1/2".



1244 - CRESCENT SHAPED DISH FROM J.P. MORGAN'S N.Y.C. "FLAGSHIP" CORSAIR, 9" WIDE.



1255A - CRESCENT SHAPED DISH FROM J.P. MORGAN'S PRIVATE STEAM YACHT "CORSAIR" WITH MORGAN HOUSE FLAG AND N.Y.C. BURGEE. 9" WIDE.



1150A - 19TH CENTURY STERLING SILVER BASKET FROM J.P. MORGAN'S "CORSAIR".



1330 - SCALLOPED EDGE PLATE FROM "CORSAIR" WITH N.Y.C. "FLAGSHIP" AND COMMODORE MARKINGS. 9" DIAMETER.



1131 - FINE BURLWOOD TRAY TOP TABLE WITH FOUR BALL AND CLAW LEGS. 31" X 24" X 31"



1145 - EARLY 20TH CENTURY MODEL OF A THREE DECK SHIP OF THE LINE. 57" X 18 1/2" X 42"



1186 - COPPER DIVER'S HELMET BY THE VENERABLE ENGLISH FIRM OF SIEBE GORMAN & CO., OF LONDON.



1148 - RARE BOSTON CLOCK FROM STEAM YACHT "SIGMA" WITH ORIGINAL LITHOGRAPH, 1897,



1165 - RARE, NAPOLEONIC PRISONER OF WAR BONE MODEL OF A THREE DECK ENGLISH WARSHIP. MODEL DIMENSIONS: 28" X 9" X 24".



1222 - UNIQUE YACHT BINNACLE, ONE OF SIX COMPASSES.



1187 - ORIGINAL U.S. LIGHTHOUSE SERVICE STOPWATCH C. 1937.



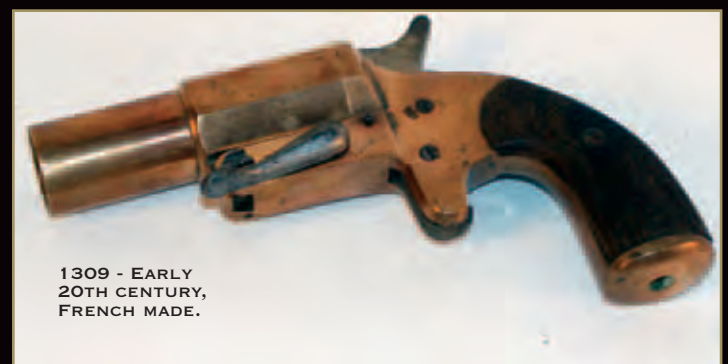
1209 - EXPERTLY CRAFTED MODEL OF GEORGE BAKER'S PRIVATE STEAM YACHT "HARVARD". 68" X 21" X 65"



1219 - SILVER PLATED TROPHY BOWL FROM A 1938 JOINT REGATTA BETWEEN THE EASTERN YACHT CLUB AND THE NEW YORK YACHT CLUB. ENGRAVED "JOINT REGATTA, AUGUST 15, 1938."



1218 - HALF HULL OF THE ALDEN DESIGNED YACHT "MALABAR X"



1309 - EARLY 20TH CENTURY, FRENCH MADE.



1277 - YACHT NOREASTER OF GREENPORT LONG ISLAND.



1284 - CASED MODEL OF AN AMERICAN TUG BOAT.



1015 - TWO STEMMED CRYSTAL CHAMPAGNE GLASSES FROM THE EASTERN YACHT CLUB OF MARBLEHEAD, MASS. WITH PAINTED CLUB BURGEES AND OWNER'S PRIVATE SIGNAL FLAGS ON CROSSED FLAGSTAFFS.



1164 - SET OF FOUR DEMITASSE CUPS FROM THE LAKE CHAMPLAIN YACHT CLUB FROM THE "VALCOUR"



1183 - ALLIGATOR WITH CIGAR HOLDING A FINELY EXECUTED MARQUETRY INLAID TRAY WITH BRASS GALLERY. 38" TALL.



1023 - A NINETEENTH CENTURY SOUP TUREEN WITH LID BY MINTONS FROM A NEW YORK YACHT CLUB VESSEL. THE SELLER'S STAMP FROM "DAVIS COLLAMORE & Co., LTD, BROADWAY & 21ST NEW YORK." ALSO MARKED WITH MINTONS PATTERN NUMBER A3023 AND HALLMARK, DATING THE TUREEN BETWEEN 1873-1891. THE TUREEN IS WHITE WITH GOLD TRIM ON THE LID HANDLE, AROUND THE EDGE OF THE LID AND BOWL. THE BOWL AND LID ARE ADORNED WITH CROSSED FLAGSTAFFS BEARING THE NEW YORK YACHT CLUB BURGEES AND OWNERS PRIVATE HOUSE FLAGS. CONDITION: SOME WEAR TO GOLD TRIM.



1113 - COFFEE CUP AND SAUCER. JOHNSON BROS, PAREEK COFFEE CUP AND SAUCER FROM THE 1946 YACHT "ALLURE" OWNED BY BARBARA WHITNEY PECK (1903 - 1982), DAUGHTER OF HENRY PAYNE "JOCK" WHITNEY & GERTRUDE VANDERBILT AND GRANDDAUGHTER OF CORNELIUS VANDERBILT. THE CHINA HAS THE BURGEES OF THE NEW YORK YACHT CLUB CROSSING STAFFS WITH THE WHITNEY HOUSE FLAG.



1019 - CHANDLER HOVEY'S 12 METER YACHT "EASTERNER", 13" x 10 1/2"



1131 - PHOTO OF SIR THOMAS SOPWITH AND HIS WIFE ON "ENDEAVOR".



1223 - ALBERT COOK CHURCH PHOTO OF YANKEE

YACHTING PHOTOS BY THE GREATS, ROSENFELD, STEBBINS, ALBERT COOK CHURCH, J.S. JOHNSTON ETC...

ALSO, RARE PRESS PHOTOS OF THE J CLASS YACHTS FROM THE 30S AND 12 METERS FROM THE 60S AND 70S.



1256 - PRESS PHOTO OF BRITISH YACHT "KURREWA I"



1235 - PRESIDENTIAL STEAM YACHT MAYFLOWER. 6 3/4" x 8 3/4".



1109 - ROSENFELD YACHT "ANDIAMO".



1247 - YACHTSMAN ROD STEVENS



1174 - ROSENFELD PHOTO OF RAINBOW



1061 - AMERICA'S CUP PRESS PHOTO OF WEATHERLY, 11" x 8".



1087 - TWO 19TH CENTURY PHOTOS OF AMERICA'S CUP YACHT "COLUMBIA" BY J.S. JOHNSTON (C. 1839 - DECEMBER 17, 1899).



1208 - GROUP OF FIVE NEW YORK YACHT CLUB INTERIOR AND FACADE PHOTOS FROM 1901.

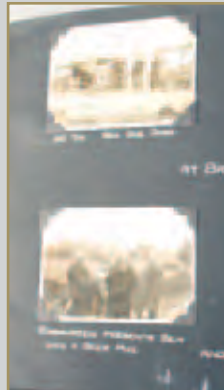
CROSSING THE ATLANTIC IN
 "LANDFALL"
 1931
 CREW.

FIRST WATCH		SECOND WATCH	
PAUL HAMMOND	OWNER & SKIPPER	BRYAN WAITE	MATE
UFFA FOX	SAIL TRIMMER	KIM NORTON	2ND MATE
JOHN QUINCY ADAMS	SPARKS	LAWRENCE POOL	SHIP SURGEON
WALDO HOWLAND	ENGINEER	JOHN W. STEDMAN	BOBUN
JOHN HALLOWELL	SAIL MAKER	LAWRENCE GRANNELL	ASSNT. NAVIGATOR
BEN AMES	NAVIGATOR	JOE FREDERICKS	COOK

HISTORIC
 PHOTO ALBUM
 BY UFFA FOX
 DOCUMENTING
 THE 1931
 TRANSATLANTIC
 OCEAN RACE
 FROM YACHT
 "LANDFALL"



THE SKIPPER.
 WHO MADE ELEVEN MEN HAPPY
 FOR THE SUMMER 1931,
 AND GAVE THEM PLEASANT MEMORIES
 FOR ALL TIME.



THIS MODEL IS OUTFITTED WITH RAISED PANELED MAHOGANY CABINS, PLANKED DECK, TURNED BRASS FITTINGS, RIGGED MASTS ETC... DETAILED LONGBOATS AND LAUNCHES HANG FROM DAVITS. THE VESSEL FLIES THE NEW YORK YACHT CLUB BURGEE AND THE MORGAN HOUSE FLAG. MOUNTED INTO A MAHOGANY DISPLAY CASE WITH MATCHING TABLE. 56" LONG X 16" WIDE X 57" HIGH

1159
 EXCEPTIONAL
 MODEL
 OF CORSAIR IV,
 JP MORGAN'S
 PRIVATE
 STEAM
 YACHT.



1192 -
 VINTAGE
 POND
 YACHT.
 THERE
 ARE A
 NUMBER
 OF
 GREAT
 POND
 MODELS
 IN THIS
 AUCTION.



1055A - IMPORTANT EARLY 19TH CENTURY WATERCOLOR OF INDIA WHARF



1056 - HALL TABLE - LOTS OF OCCASIONAL TABLES IN THIS SALE



1068 - SCHOONER YACHT "COLONIA"



1041 - LARGE IRON MERMAID



1093 - PERKO LANTERN



1047 - LIBRARY GLOBE ON CARVED MAHOGANY STAND



1145A - EARLY 20TH CENTURY YACHT BINNACLE



1064 - CARVED WOOD MIRROR, FEDERAL STYLE



1077 - ELMWOOD CAPTAIN'S CHAIR WITH NEW YORK YACHT CLUB BURGEE



1119A - BRITANNIA DECK BUCKET



1144 - JOSEPH HARPER ENGINE ORDER TELEGRAPH



1190 - "LADY GAY" OF NEWBURY



1038 - HALF MODEL "CHALLENGE" BY THE "LITTLE SHIPYARD"



1156 - ONE OF MANY POND YACHTS IN THE SALE



1048 - BRONZE OF A FROG RIDING A TURTLE



1322 - ONE OF THREE SHIP'S WHEELS

CHANDLER HOVEY'S AMERICA'S CUP TROPHY



EXTREMELY RARE 2/3 SIZE REPLICA OF THE AMERICA'S CUP TROPHY. THIS BEAUTIFUL RECREATION OF "THE AULD MUG" WAS ONCE THE POSSESSION OF WORLD RENOWNED

CORINTHIAN YACHTSMAN, CHANDLER HOVEY.

HOVEY OWNED CUP YACHTS, RACED CUP YACHTS AND LOVED CUP YACHTS. HE ONCE OWNED THE J BOATS "YANKEE" AND LATER "RAINBOW", "WEETAMOE" AND 12 METER YACHT "EASTERNER". YANKEE LOST A NOTABLE RACE TO RAINBOW BY ONE SECOND AND ALONG WITH IT A CHANCE TO DEFEND THE CUP. MANY THOUGHT YANKEE CROSSED THE LINE FIRST, THE REST IS HISTORY. HOVEY NEVER WON THE

CUP BUT HE WAS INSTRUMENTAL IN MANY CAMPAIGNS. THE CUP IS CAST FROM PEWTER AND IS IN IT'S ORIGINAL FORM WITHOUT THE EXTRA BASES ADDED THROUGH THE YEARS. IT HAS A WARM PATINA AND IS IN VERY GOOD CONDITION. IT IS BELIEVED THAT THIS CUP WAS PRESENTED TO HOVEY AFTER THE CUP RACES IN 1934. 19" x 8 1/2" x 5 1/2" BASE DIAMETER.



BOSTON HARBOR AUCTIONS

PRESORT
FIRST CLASS
US POSTAGE
PAID
PERMIT NO 1
GLOUCESTER MA

185 PURCHASE ST. BOSTON, MA 02110
CORNER OF CONGRESS ST.
DOWNTOWN, WATERFRONT

OUR ENTRANCE IS THE BACK SIDE OF THE
99 HIGH ST. OFFICE TOWER.
ENTER ON PURCHASE STREET.

PHONE: 617 451 2650 OR 617 549 2881
EMAIL: INFO@BOSTONHARBORAUCTIONS.COM
WWW.BOSTONHARBORAUCTIONS.COM
INFO@BOSTONHARBORAUCTIONS.COM

AUCTIONEER LIC #2428



1140 - OIL ON CANVAS DEPICTING YACHTS RACING IN BOSTON HARBOR ATTRIBUTED TO CLEMENT DREW (1806-1889), CIRCA 1850. THE PAINTING HAS A 19TH CENTURY STYLE COVE FLUTED METAL FRAME. THE TOP SURFACE OF THE FRAME AND LINER HAS A GOLD COLORED METAL SURFACE. 22" X 30" ON SIGHT, 31" X 38 3/4" , OVERALL.

HISTORY OF YACHTING AND THE AMERICA'S CUP AUCTION

WITH ONE HUNDRED SHIP
MODELS AND OTHER MARITIME

ENTIRE CATALOG CAN BE VIEWED AT
WWW.BOSTONHARBORAUCTIONS.COM



1151 - EXOTIC YACHT TROPHY DECANTER SET AND HUMIDOR OF BURLWOOD VENEER WITH TIFFANY & Co., UNION SQUARE MAKER'S STAMP DATED 1873. 12 1/34" INCHES WIDE X 9 3/8" DEEP X 13" HIGH.

BOSTON HARBOR AUCTIONS • SUNDAY, OCTOBER 16, 2011 • 11 AM



ALL ARE WELCOME TO ATTEND • 11 AM SHARP

PREVIEWS – THURSDAY, OCTOBER 13TH: 12PM – 5PM

FRIDAY, OCTOBER 14TH: 12PM – 8PM

SATURDAY, OCTOBER 15TH: 11AM – 5PM

SUNDAY, OCTOBER 16TH: 9:30 AM – TO START OF SALE

ONLINE BIDDING, DAY OF AUCTION AVAILABLE • BID LIVE AT WWW.BOSTONHARBORAUCTIONS.COM

BOSTON HARBOR AUCTIONS

HISTORY OF YACHTING AND THE AMERICA'S CUP AUCTION

WITH ONE HUNDRED SHIP
MODELS AND OTHER MARITIME

OCTOBER 16, 2011



1150 - 19TH CENTURY STARTING CANNON FROM YACHT COLONIA, THE FIRST HERRESHOFF BUILT YACHT TO COMPETE FOR THE AMERICA'S CUP. J PIERPONT MORGAN WAS ONE OF COLONIA'S OWNERS. THE BARREL LENGTH ALONE ON THIS CANNON IS 29 INCHES.



1116 - SOLID RED BRASS HINGED BEZEL CHELSEA SHIP'S BELL CLOCK, C. 1935.



1104 - ELEGANT MARINE PAINTING OF THE PRIVATE STEAM YACHT "VENETIA" BY NOTED ARTIST EDOUARD ADAM. THIS PAINTING DEMONSTRATES EXPERT ABILITY AND SHOWS THE GRACIOUS STEAM YACHT CRUISING THROUGH ROLLING SEAS. DIMENSIONS OVERALL 30" HIGH X 40" WIDE APPROX.